



December Tip of the Month - Lanyon Total Access™

Trace Viewer Enhancement

Lanyon is pleased to announce its' latest enhancement to Lanyon Total Access™, exporting Send/Receive commands from the Trace Viewer found under the Reports header on the home page.

The screenshot shows the Lanyon Total Access home page navigation menu. The menu is organized into several sections:

- Home**
- Select a View**
 - Emulator
 - Gateway Status
 - Macros
- Administration**
 - Company
 - GDS
 - Protocols
 - Gateways
 - Messages
 - Ad Servers
- Lanyon Macros**
 - Admin Macros
 - Login Macros
 - Standard Macros
 - Macro Packages
 - Macro Templates
- Reports**
 - Usage Summary
 - Current Users
 - View Errors
 - Trace Viewer

A callout box with the text "Link to Trace Viewer" points to the "Trace Viewer" link in the Reports section. To the right of the menu items, there is a vertical column of status indicators: a blue bar with the number "1", a green checkmark, a red "X", a green checkmark, a green checkmark, a green checkmark, a green checkmark, a green checkmark, a green checkmark, a green checkmark, a green checkmark, a red "X", and a blue bar with the number "1". At the bottom right of the menu, there is a "No f" button.

Once you've accessed the Trace Viewer you will be required to select "Search" to access the trace logs.

Parameters

Start Date: November, 2009
 End Date: November, 2009

GatewayType: -All-
 Company: -All-
 User: -All-
 Pool: -All-

Search

Click to Search

Upon completion of your "Search" you will see two new icons; (1) View Trace Logs (2) Export Trace Logs

Home Emulator Gateway Status User Options Help

Home > Trace Viewer

Select a View
 Emulator
 Gateway Status
 Macros

Administration
 Company
 GDS
 Protocols
 Gateways
 Messages
 Ad Servers

Lanyon Macros
 Admin Macros
 Login Macros
 Standard Macros
 Macro Packages
 Macro Templates

Reports
 Usage Summary
 Current Users
 View Errors
 Trace Viewer

Parameters

Start Date: November, 2009
 End Date: November, 2009

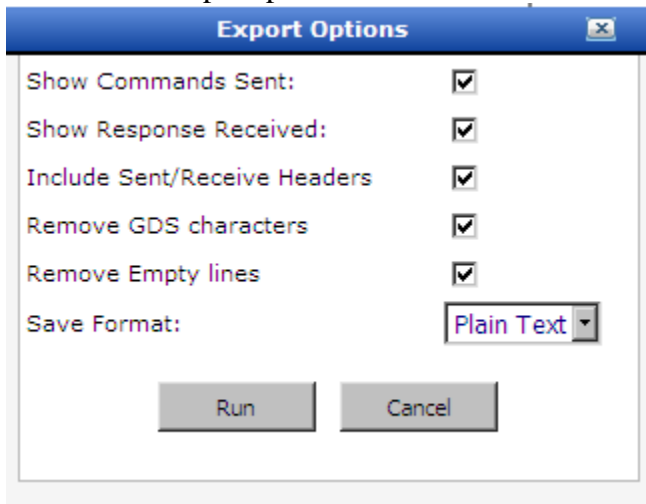
GatewayType: -All-
 Company: Lanyon, Inc.
 User: -All-
 Pool: -All-

Search

Detail	Event Date	Duration
	11/9/2009 6:54:21 AM	3 Minutes
	11/9/2009 6:54:40 AM	2 Minutes
	11/9/2009 6:48:36 AM	2 Minutes
	11/9/2009 6:44:56 AM	0 Minutes
	11/9/2009 6:26:39 AM	17 Minutes

New Link to export trace logs

There are multiple options available to select from when exporting your Trace Logs



Show Commands Sent – By selecting this option you will export your input commands

Show Response Received – By selecting this option you will export the responses from the GDS(s)

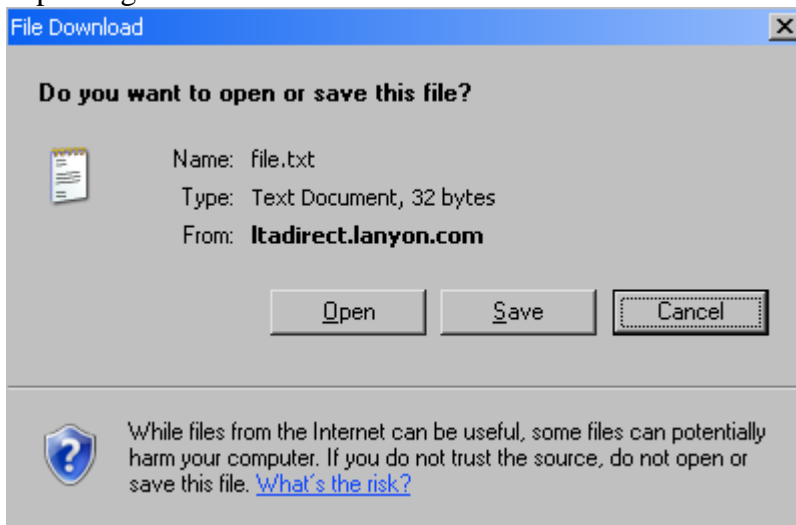
Include Sent/Receive Headers – By selecting this option Lanyon will denote Sent/Receive commands

Remove GDS Characters – By selecting this option Lanyon will remove GDS characters from the export

Remove Empty Lines – By selecting this option Lanyon will remove blank lines in your exported screens

Save Format – This option will let you select; Plain Text, Excel or HTML as your exporting formats

Once you've selected your export options you will have the option to Open or Save the export log.



Should have any questions regarding this new enhancement please email

GDSSupport@Lanyon.com